

Discover all the greener options in our complete collection.

Sustainability Declaration

midocean's Management is aware of its responsibility to further develop not only a socially responsible business, but also a sustainable one, with care for the environment.

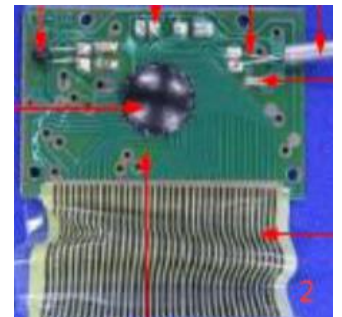
We strive to achieve sustainable development in every aspect, and to achieve economic growth whilst minimising our impact on the environment and our natural resources.

We focus strongly on expanding the range of sustainable products. Therefore, we assembled 'The Greener Choice', a growing range of sustainable merchandising solutions made of natural, renewable or recycled materials which complements our original product assortment.

This way we offer everyone access to sustainable products at attractive prices. We want our customers to recognize our sustainable products and understand why the item is sustainable, this will then allow an educated choice when selecting a product from our collection.



Item number
MO9695



Item description

Photo frame in bamboo with weather station.

Material content

Part	Component description	Position	Material	Weight Percentage
1	Shell	Plastic shell	Acrylonitrile Butadiene Styrene (ABS)	25,00%
		Bamboo shell	Bamboo	25,00%
		Screw	Iron with nickelate	5,00%
		Rubber	Silicone	5,00%
		Paper	Paper	5,00%
		Transparent glass sheet	Glass	5,00%
		Spring	Stainless Steel - Carbon 0.05% - Silicone 0.3% - Manganese 1.74% - Phosphorus 0.036% - Sulphur 0.005% - Nickle 8.2% - Chromium 18.8% - Iron 71.9677%	3,00%
2	PCB board	PCB	Printed Circuit Board (PCB)	27,00%
			Total	100,00%

Discover all the greener options in our complete collection.

Material information	Petrochemical	Partly Biobased	Biobased
Non-biodegradable	PA, PE, PP, PET, RPET, PS, PVC, ABS, VI, Silicone, POM, ACR, PU, PC, PVC	PLA/ABS, Wheat Straw/PP, Wheat Straw/ABS, Bamboo/PP, Coffee Husk/PP, Coffee Husk/ABS	
Biodegradable (industrial)	PBAT	PLA/BPAT	Bamboo , Wheat Straw, PLA, Paper, Paper Straw, PLA/Wheat Straw, PLA/Bamboo, Cork, Cotton

Recyclability of material	
<input checked="" type="checkbox"/> Yes	<input type="checkbox"/> No

Renewable source		
Recycled material	Natural material	Reused waste material
<input type="checkbox"/> Yes <input checked="" type="checkbox"/> No	<input checked="" type="checkbox"/> Yes <input type="checkbox"/> No	<input type="checkbox"/> Yes <input checked="" type="checkbox"/> No

End of life suggestion



Trademarks of material

n.a.

Fulfilled technical standards

EMC Directive 2014/30/EU
 RoHS Directive 2011/65/EU and its amendment (EU) No.2015/863
 In compliance with NORM EN717-3 for formaldehyde on wood product.

Quality certifications/ social audits factory



Packaging and Transport

Each article packed with tissue paper wrap. 30 pieces in an inner carton. 60 pieces in 1 export carton. midocean is connected to the various European recycling system for packaging. Shipped with external carriers.

midocean

Mrs. P. Varela

Buying & Portfolio Director