



中国认可
国际互认
检测
TESTING
CNAS L6478



TEST REPORT

Reference No. : WTF18F11129137C
Applicant : Mid Ocean Brands B.V.
Address : 7/F., Kings Tower, 111 King Lam Street, Cheung Sha Wan, Kowloon, Hong Kong
Manufacturer : 114103
Sample Name : Transparent badge
Model No. : MO9642
Test Requested : 1) Determination of specified Phthalates content according to Annex XVII Items 51 & 52 of the REACH Regulation (EC) No. 1907/2006 & Amendment No. 552/2009
 2) Determination of Lead content in the submitted sample in accordance with REACH regulation Annex XVII Entries 63 (EC) No. 1907/2006 and the amendment No. 836/2012 and (EU) 2015/628
 3) Determination of Cadmium content in the submitted sample in accordance with REACH regulation Annex XVII Entries 23 (EC) No. 1907/2006 and the amendment No. 552/2009, No. 494/2011, No. 835/2012 and (EU) 2016/217
 4) Nickel content requirement in Annex XVII Item 27 of the REACH Regulation (EC) No. 1907/2006 & amendment No.552/2009 (formerly known as Directive 94/27/EC and 2004/96/EC)
Test Method : Please refer to next page (s)
Test Conclusion : Please refer to next page (s)
Date of Receipt sample..... : 2018-11-15
Date of Test..... : 2018-11-15 to 2018-11-27
Date of Issue : 2018-11-27
Test Result : Please refer to next page (s)

Remarks:

The results shown in this test report refer only to the sample(s) tested, this test report cannot be reproduced, except in full, without prior written permission of the company. The report would be invalid without specific stamp of test institute and the signatures of reporter and reviewer.

Prepared By:

Waltek Services (Foshan) Co., Ltd.

Address: No.13-19, 2/F., 2nd Building, Sunlink International Machinery City, Chencun, Shunde District, Foshan, Guangdong, China

Tel:+86-757-23811398 Fax:+86-757-23811381 E-mail:info@waltek.com.cn

Compiled by:

Swing Liang

Swing.Liang /Project Engineer

Approved by:



Dino Zhang

Dino.Zhang /Lab Manager

**Test Result:****1) Phthalates**

Test Method: With reference to EN14372:2004, by Gas Chromatographic-Mass Spectrometric (GC-MS) analysis.

Test Items	BBP	DBP	DEHP	DIDP	DINP	DNOP	--
MDL (%)	0.005	0.005	0.005	0.01	0.01	0.005	--
Limit (%)	sum of three phthalates < 0.1			sum of three phthalates < 0.1			--
Specimen No.	Result (%)						Conclusion
No.1	ND	ND	ND	ND	0.057	ND	Pass

Note:

DBP= Dibutyl phthalate

BBP= Benzyl butyl phthalate

DEHP= Bis-(2-ethylhexyl)- phthalate

DINP= Di-isononyl phthalate

DNOP= Di-n-octyl phthalate

DIDP= Di-isodecyl phthalate

(1) % = percentage by weight

(2) ND = Not detected or Less than the method detection limit

(3) MDL=Method Detection Limit

(4) "<" = less than

(5) The above limit was quoted according to Annex XVII Items 51 & 52 of the REACH Regulation (EC) No. 1907/2006 & Amendment No. 552/2009(formerly known as Directive 2005/84/EC) for phthalate content in toys and child care articles.

2) Lead (Pb)

Test Method: With reference to IEC 62321-5:2013, the analysis was performed by ICP-OES.

Test Item	MDL (mg/kg)	Results (mg/kg)			Limit (mg/kg)
		No.1	No.2	No.3	
Lead(Pb)	2	ND	ND	ND	500
Conclusion	--	Pass	Pass	Pass	--

Test Item	MDL (mg/kg)	Results (mg/kg)			Limit (mg/kg)
		No.4	No.5	No.6	
Lead(Pb)	2	ND	ND	ND	500
Conclusion	--	Pass	Pass	Pass	--

Note:

(1) mg/kg = milligram per kilogram

(2) ND = Not Detected (lower than MDL)

(3) MDL = Method Detection Limit

(4) Limit of Lead was quoted from REACH regulation Annex XVII Item 63 (EC) No. 1907/2006 and the amendment No. 836/2012 and (EU) 2015/628.



3) Cadmium (Cd)

Test Method: With reference to IEC 62321-5:2013, the analysis was performed by ICP-OES.

Test Item	MDL (mg/kg)	Results (mg/kg)
		No.1
Cadmium(Cd)	2	ND
Conclusion	--	Pass

Note:

- (1) mg/kg = milligram per kilogram
- (2) ND = Not Detected (lower than MDL)
- (3) MDL = Method Detection Limit
- (4) Limit of Cadmium according to REACH regulation Annex XVII Item 23 (EC) No. 1907/2006 and the amendment No. 552/2009, No. 494/2011 and No. 835/2012 and (EU) 2016/217.

Category	Limit (mg/kg)
Wet paint	100
Surface coating	1000
Plastic	100
Metal parts of jewellery and hair accessories	100

4) Nickel release

Test method: With reference BS EN1811: 2011+A1:2015, Nickel content was determined by Inductively Coupled Argon Plasma Spectrometry

Item No.	Sample Area (cm ²)	Volume of Test Solution(ml)	Nickel release (µg/cm ² /week)				Conclusion
			Trial 1	Trial 2	Trial 3	Average	
No.2	6.17	10	ND	ND	ND	ND	Pass

Note:

- (1) µg/cm²/week = microgram per square centimetre per week
- (2) Method Detection limit = 0.05 µg/cm²/week
- (3) ND = Not detected or less than the value of Method Detection Limit
- (4) Interpretation of test results:

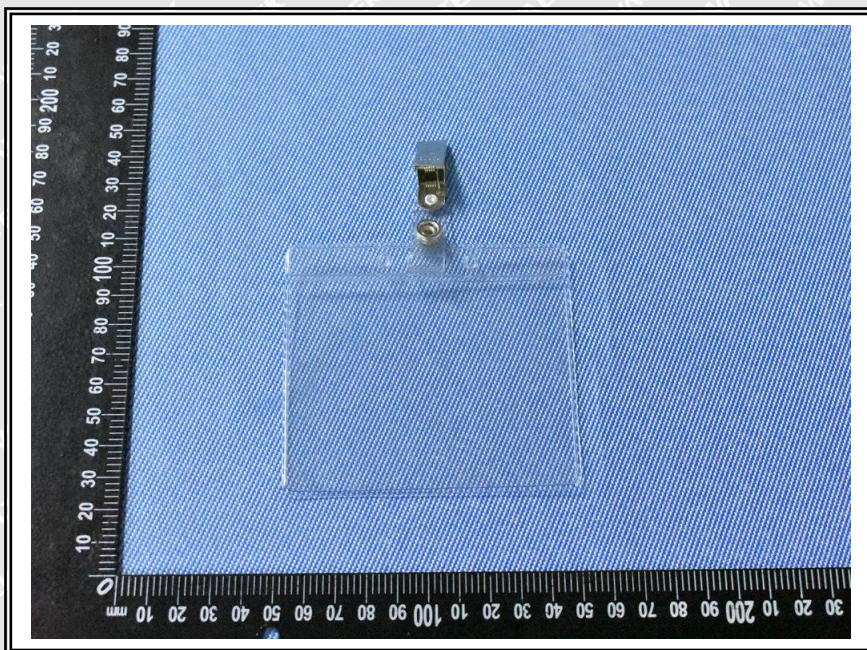
Type of sample	Nickel Release(µg/cm ² /week)	
	Pass	Fail
Other components in direct and prolonged contact with the skin	<0.88	≥0.88
Post assemblies and body piercings (Post assemblies which are inserted into pierced parts of the human body)	<0.35	≥0.35



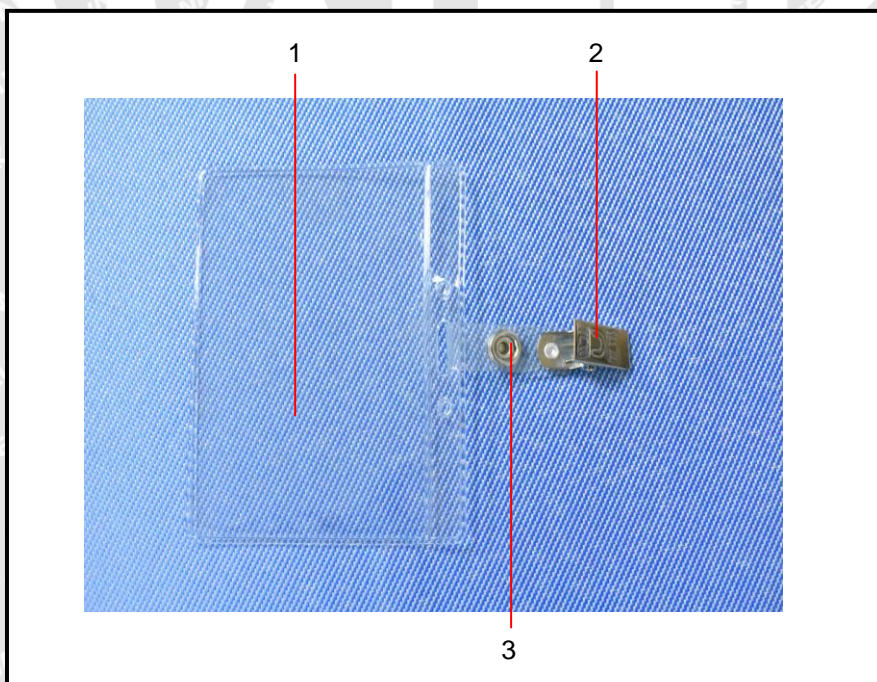
Test Specimen Description:

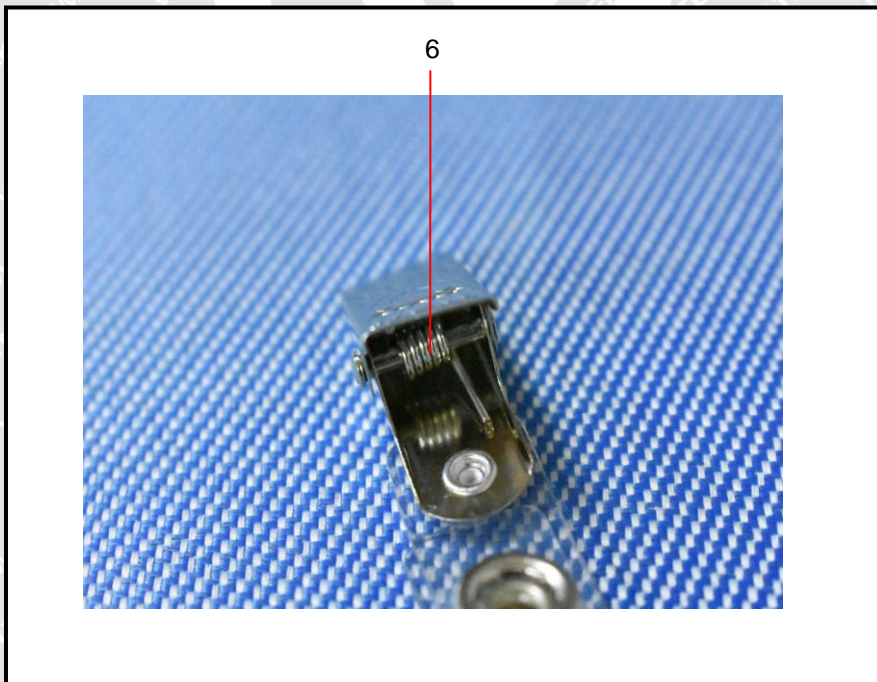
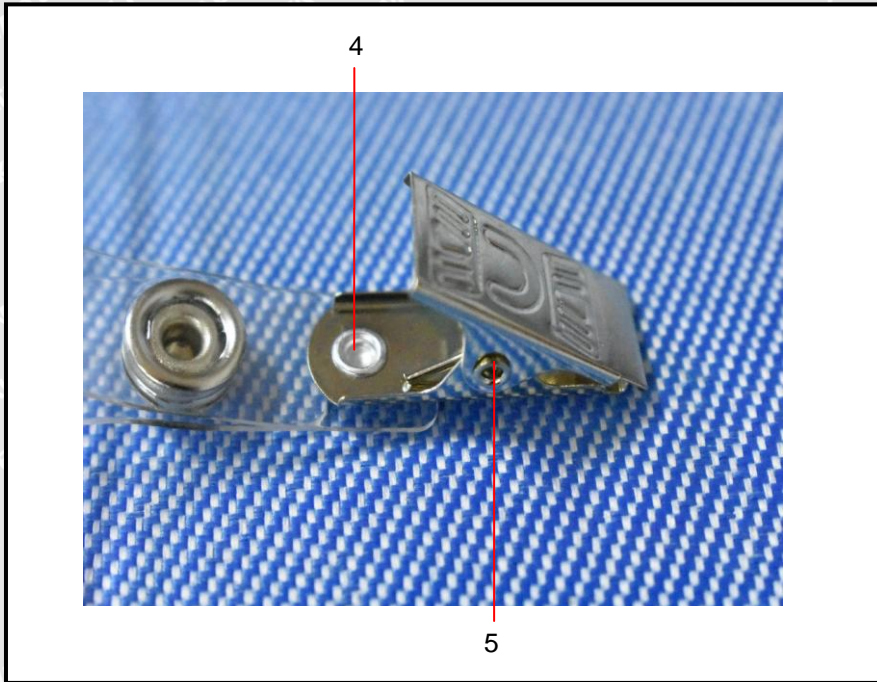
- No.1: Transparent PVC badge
- No.2: Silvery metal clip
- No.3: Silvery metal button
- No.4: Silvery metal rivet
- No.5: Silvery metal axle
- No.6: Silvery metal spring

Sample photo:



Photographs of parts tested:





===== End of Report =====