



中国认可
国际互认
检测
TESTING
CNAS L6478



TEST REPORT

Report No. : WTF19F11078595C

Applicant : Mid Ocean Brands B.V.

Address : 7/F., Kings Tower, 111 King Lam Street, Cheung Sha Wan, Kowloon, Hong Kong

Manufacturer : 111652

Sample Name : Backpack with padded shoulder strap

Model No. : MO9294

Sample Receiving Date : 2019-11-13

Testing Period : 2019-11-13 to 2019-11-18

Date of Issue : 2019-11-18

Test Result : Please refer to next page (s)

Remarks:

The results shown in this test report refer only to the sample(s) tested; this test report cannot be reproduced, except in full, without prior written permission of the company. The report would be invalid without specific stamp of test institute and the signatures of compiler and approver.

If the report is not stamped with the accreditation recognized seal, it will only be used for scientific research, education, and internal quality control activities, and is not used for the purpose of issuing supporting data to the society.

Prepared By:

Waltek Services (Foshan) Co., Ltd.

Address: No.13-19, 2/F., 2nd Building, Sunlink International Machinery City,
Chencun, Shunde District, Foshan, Guangdong, China

Tel: +86-757-23811398 Fax: +86-757-23811381 E-mail: info@waltek.com.cn

Compiled by:

Humour.Wu

Humour.Wu/ Project Engineer

Approved by:

Syng Liang

Syng.Liang/ Lab Manager



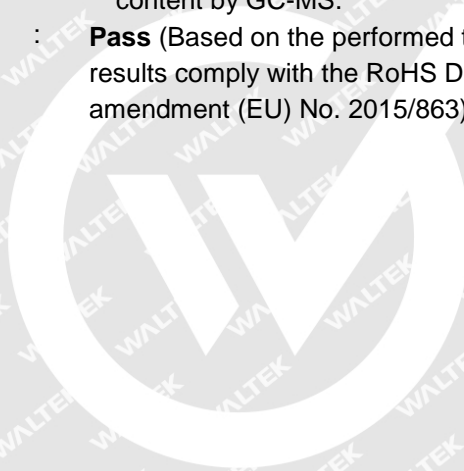


Test Requested..... : In accordance with the RoHS Directive 2011/65/EU and its amendment (EU) No. 2015/863.

Test Method :

- 1) With Reference to IEC 62321-2:2013, disassembly, disjunction and mechanical sample preparation
- 2) With Reference to IEC 62321-3-1:2013, screening - Lead, mercury, cadmium, total chromium and total bromine by X-ray fluorescence spectrometry
- 3) With reference to IEC 62321-4:2013+AMD1:2017 CSV, determination of Mercury by ICP-OES
- 4) With reference to IEC 62321-5:2013, determination of Lead and Cadmium by ICP-OES
- 5) With reference to IEC 62321-7-2: 2017 and IEC 62321-7-1: 2015, determination of Hexavalent Chromium by UV-Vis
- 6) With reference to IEC 62321-6:2015, determination of PBBs and PBDEs by GC-MS
- 7) With reference to IEC 62321-8:2017, determination of Phthalates content by GC-MS.

Test Conclusion..... : **Pass** (Based on the performed tests on the submitted samples, the results comply with the RoHS Directive 2011/65/EU and its amendment (EU) No. 2015/863)



WALTEK

**Test Results:****1. Lead, Mercury, Cadmium, Hexavalent Chromium, PBBs and PBDEs**

Part No.	Part Description	Result of XRF					Result of Wet Chemical Testing (mg/kg)
		Cd	Pb	Hg	Cr	Br	
1	Black plastic shell of plug	BL	BL	BL	BL	BL	NA
2	Solder of plug	BL	IN	BL	BL	BL	Pb :422
3	White plastic core of plug	BL	BL	BL	BL	BL	NA
4	Golden metal pin of plug	BL	BL	BL	BL	BL	NA
5	Slivery metal shell of plug	BL	BL	BL	BL	BL	NA
6	Black plastic wire jacket	BL	BL	BL	BL	BL	NA
7	Red plastic wire covering	BL	BL	BL	BL	BL	NA
8	Coppery metal wire	BL	BL	BL	BL	BL	NA
9	Green plastic wire covering	BL	BL	BL	BL	BL	NA
10	Black plastic wire covering	BL	BL	BL	BL	BL	NA
11	Blue plastic wire covering	BL	BL	BL	BL	BL	NA
12	Black plastic shell of plug	BL	BL	BL	BL	BL	NA
13	Solder of plug	BL	BL	BL	BL	BL	NA
14	Golden metal pin of plug	BL	BL	BL	BL	BL	NA
15	White plastic core of plug	BL	BL	BL	BL	BL	NA
16	Slivery metal shell of plug	BL	BL	BL	BL	BL	NA

**Remark:**

- (1) Results are obtained by EDXRF for primary screening, and further chemical testing by ICP (for Cd, Pb, Hg), UV-VIS (for Cr^{6+}) and GC-MS (for PBBs, PBDEs) is recommended to be performed, if the concentration exceeds the below warning value according to IEC 62321-3-1: 2013 (unit: mg/kg)

Element	Polymer	Metal	Composite Materials
Cd	$\text{BL} \leq (70-3\sigma) < \text{IN} < (130+3\sigma) \leq \text{OL}$	$\text{BL} \leq (70-3\sigma) < \text{IN} < (130+3\sigma) \leq \text{OL}$	$\text{LOD} < \text{IN} < (150+3\sigma) \leq \text{OL}$
Pb	$\text{BL} \leq (700-3\sigma) < \text{IN} < (1300+3\sigma) \leq \text{OL}$	$\text{BL} \leq (700-3\sigma) < \text{IN} < (1300+3\sigma) \leq \text{OL}$	$\text{BL} \leq (500-3\sigma) < \text{IN} < (1500+3\sigma) \leq \text{OL}$
Hg	$\text{BL} \leq (700-3\sigma) < \text{IN} < (1300+3\sigma) \leq \text{OL}$	$\text{BL} \leq (700-3\sigma) < \text{IN} < (1300+3\sigma) \leq \text{OL}$	$\text{BL} \leq (500-3\sigma) < \text{IN} < (1500+3\sigma) \leq \text{OL}$
Cr	$\text{BL} \leq (700-3\sigma) < \text{IN}$	$\text{BL} \leq (700-3\sigma) < \text{IN}$	$\text{BL} \leq (500-3\sigma) < \text{IN}$
Br	$\text{BL} \leq (300-3\sigma) < \text{IN}$	--	$\text{BL} \leq (250-3\sigma) < \text{IN}$

BL= Below Limit

OL= Over Limit

LOD = Limit of Detection

-- = Not Regulated

- (2) "IN" expresses the inconclusive region, and further chemical testing to confirm whether it complies with the requirement of RoHS Directive.
- (3) The XRF screening test for RoHS elements – the reading may be different to the actual content in the sample be of non-uniformity composition.
- (4) mg / kg =milligram per kilogram=ppm, $\mu\text{g}/\text{cm}^2$ = Micrograms per square centimetre.
- (5) NA = Not Applicable, as the XRF screening test result was below the limit or as the XRF screening directly determine that test result was over the limit, it was not need to conduct the wet chemical testing.
- (6) MDL= Method Detection Limit in wet chemical test.

Test Items	Pb	Cd	Hg	Cr^{6+}		PBB	PBDE
Units	mg/kg	mg/kg	mg/kg	mg/kg	$\mu\text{g}/\text{cm}^2$	mg/kg	mg/kg
MDL	2	2	2	2	0.1	5	5

The MDL for single compound of PBBs and PBDEs is 5mg/kg, MDL of Cr^{6+} for polymer and composite sample is 2mg/kg and MDL of Cr^{6+} for metal sample is 0.1 $\mu\text{g}/\text{cm}^2$.

- (7) RoHS Requirement

Restricted Substances	Limits
Cadmium (Cd)	0.01% (100 mg/kg)
Lead (Pb)	0.1% (1000 mg/kg)
Mercury (Hg)	0.1% (1000 mg/kg)
Chromium (VI) (Cr^{6+})	0.1% (1000 mg/kg)
Polybrominated Biphenyls (PBBs)	0.1% (1000 mg/kg)
Polybrominated Diphenyl Ethers (PBDEs)	0.1% (1000 mg/kg)

- (8) According to IEC 62321-7-1:2015, determined of Cr^{6+} on metal sample by boiling water extraction test method, and result is shown as Positive/Negative.

Boiling water extraction:

Negative = Absence of Cr^{6+} coating, the detected concentration in boiling water extraction solution is less than 0.10 $\mu\text{g}/\text{cm}^2$.

Positive = Presence of Cr^{6+} coating, the detected concentration in boiling water extraction solution is greater than 0.13 $\mu\text{g}/\text{cm}^2$.

Information on storage conditions and production date of the tested sample is unavailable and thus Cr^{6+} results represent status of the sample at the time of testing.



(9) Abbreviation:

“Pb” denotes Lead, “Cd” denotes Cadmium, “Hg” denotes Mercury, “Cr” denotes Chromium, “Cr (VI)” denotes Hexavalent Chromium, “Br” denotes Bromine, “PBBs” denotes Total Polybrominated Biphenyls, “PBDEs” denotes Total Polybrominated Diphenyl Ethers.

2. Phthalates:

Serial No.	Part No.	Result (mg/kg)			
		DBP	BBP	DEHP	DIBP
T01	1+3 [△]	<50	<50	<50	<50
T02	6	90	<50	<50	<50
T03	7	<50	<50	<50	<50
T04	9	<50	<50	<50	<50
T05	10	<50	<50	<50	<50
T06	11	<50	<50	<50	<50
T07	12	<50	<50	83	<50
T08	15	<50	<50	<50	<50

Note:

(1) “<” = less than

(2) mg/kg = milligram per kilogram= ppm

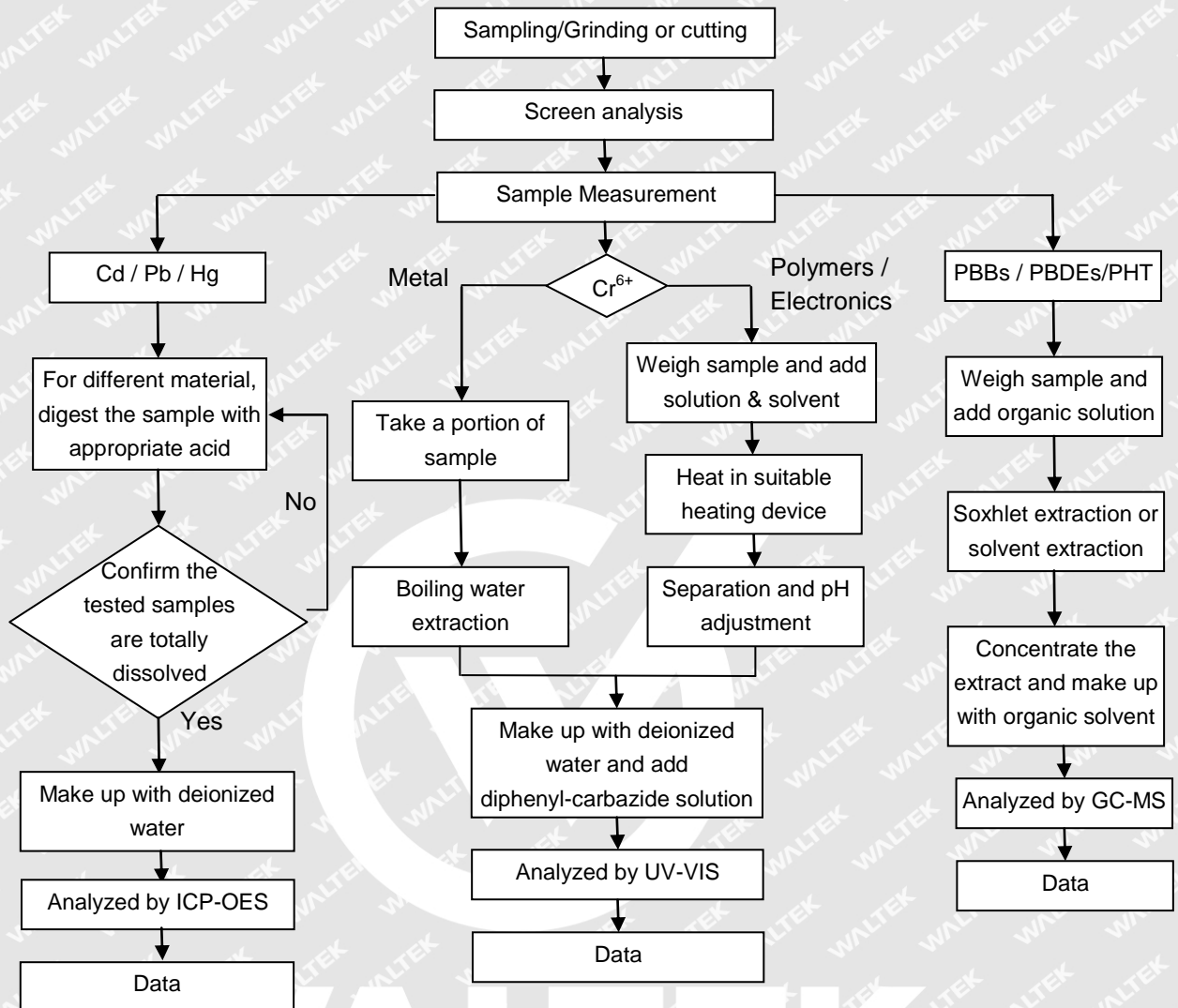
(3) Abbreviation:

“DBP” denotes Dibutyl phthalate, “BBP” denotes Benzyl butyl phthalate (BBP), “DEHP” denotes Bis(2-ethylhexyl)-phthalate, “DIBP” denotes Diisobutyl phthalate, “PHT” denotes Phthalates.

(4) RoHS requirement

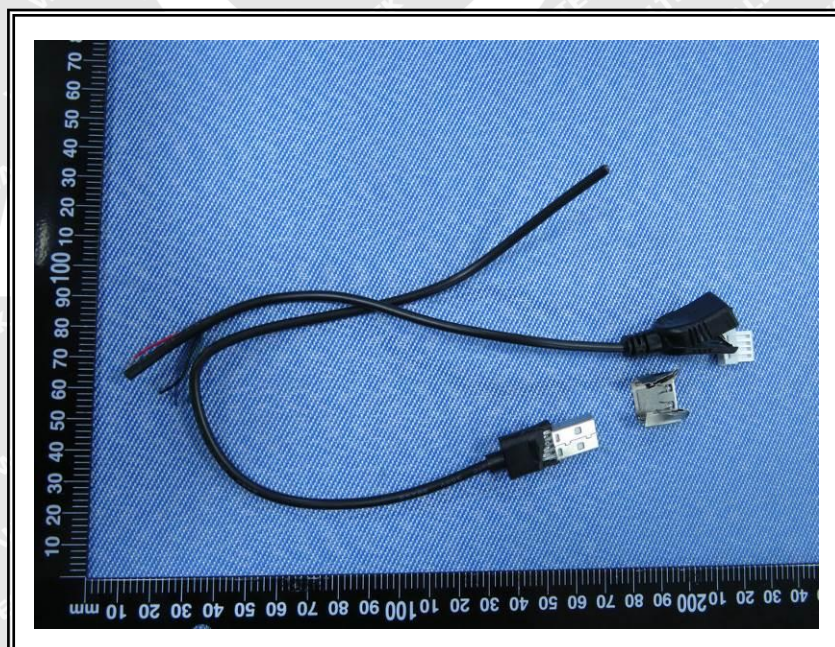
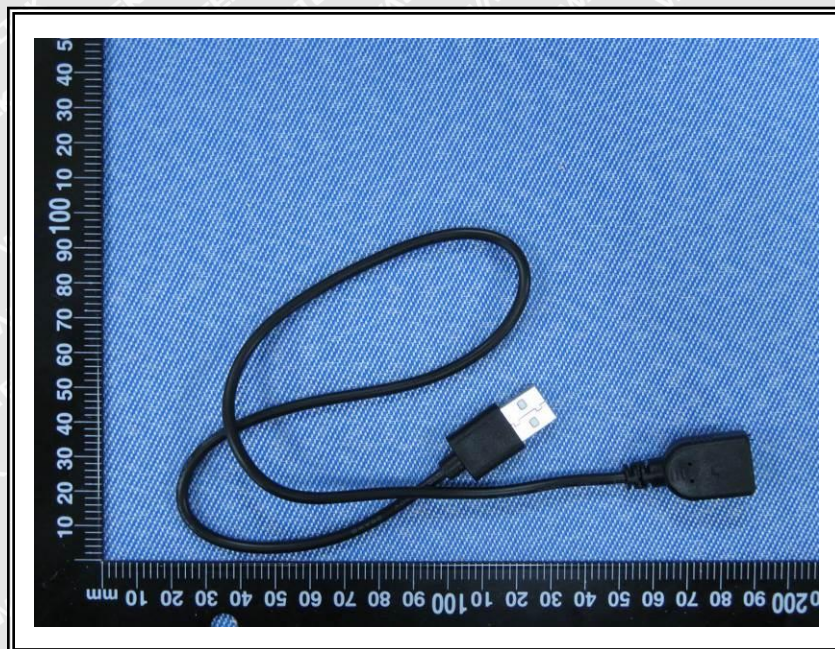
Restricted Substances	Limits
Dibutyl phthalate (DBP)	0.1% (1000 mg/kg)
Benzyl butyl phthalate (BBP)	0.1% (1000 mg/kg)
Di(2-ethylhexyl) phthalate (DEHP)	0.1% (1000 mg/kg)
Di-iso-butyl phthalate (DIBP)	0.1% (1000 mg/kg)

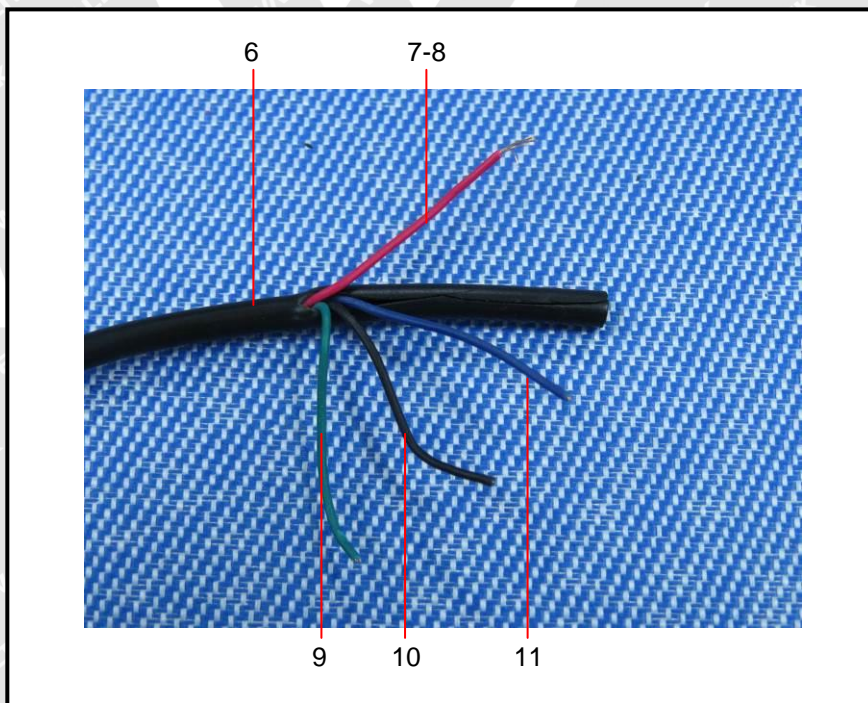
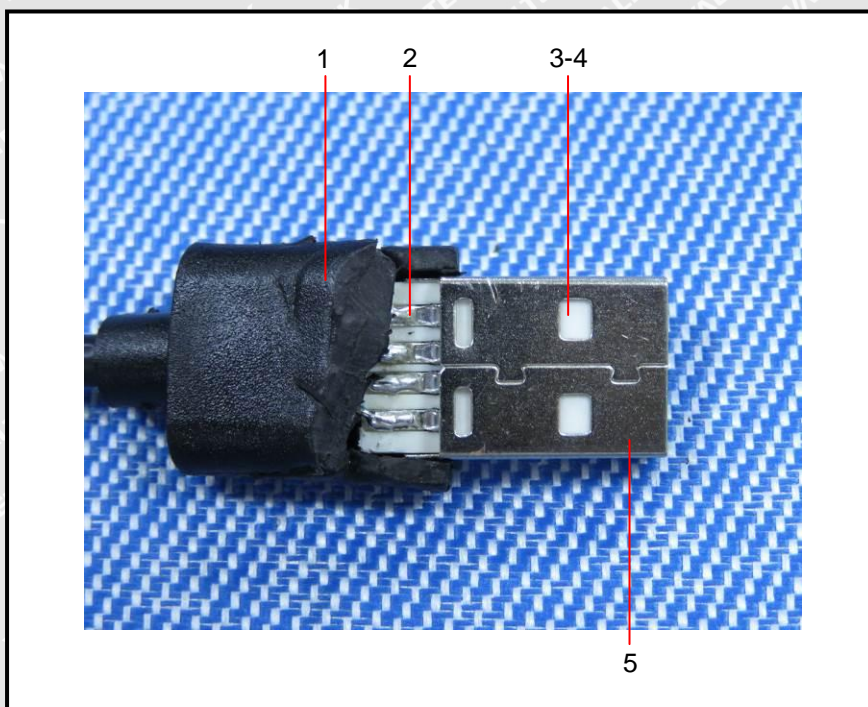
(5) “△”= As client’s requirement, the testing was conducted based on mixed components. Results are calculated by the minimum weight of mixed components.

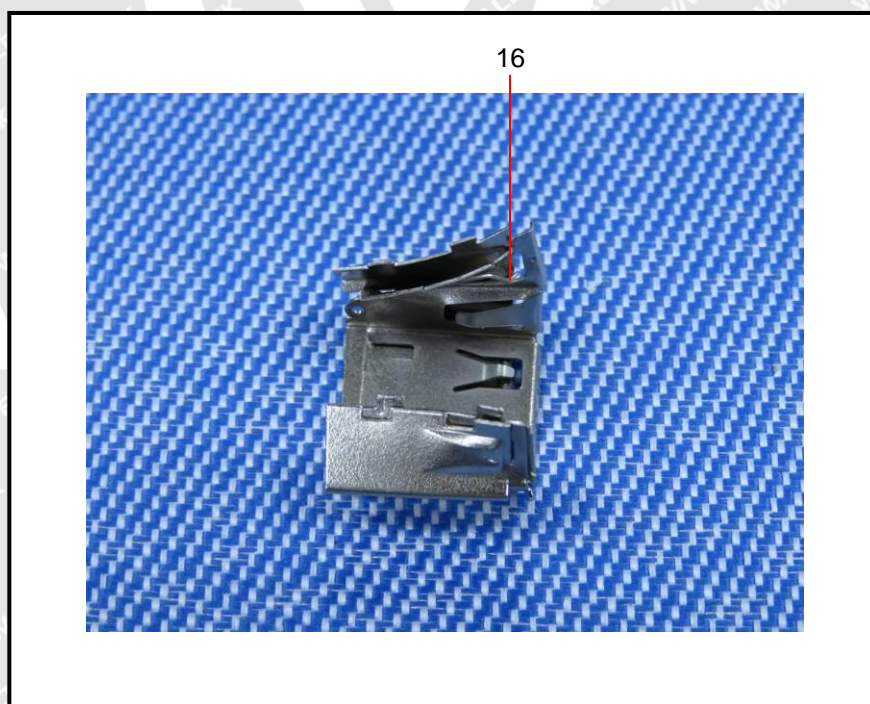
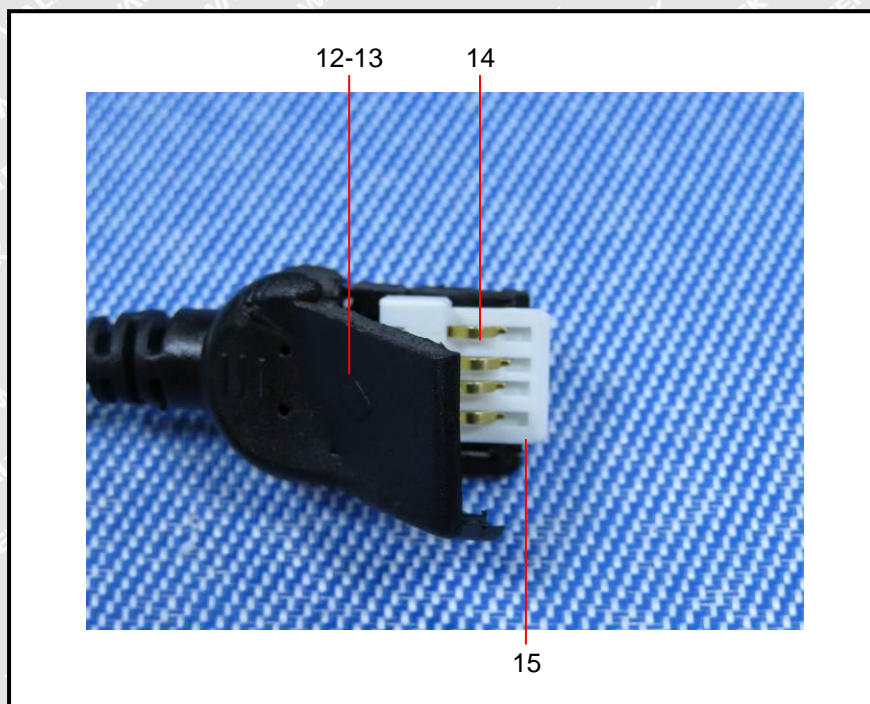
**Measurement Flowchart:**



Sample Photo:



**Photograph of parts tested:**



===== End of Report =====