



中国认可
国际互认
检测
TESTING
CNAS L6478



TEST REPORT

Reference No. : WTF19F06042227C

Applicant : Mid Ocean Brands B.V.

Address : 7/F., Kings Tower, 111 King Lam Street, Cheung Sha Wan, Kowloon, Hong Kong

Manufacturer : 108917

Sample Name : Santa stress ball, Anti-stress snowman, Anti-stress ball, Anti-stress heart, Anti-stress ball globe, Anti-stress football, Anti-stress decision dice, Anti-stress doctor, Anti-stress square, Anti-stress cloud, Anti-stress truck, Anti-stress helmet

Model No. : CX1031, CX1417, IT1332, IT3459, KC2707, KC2718, KC2720, MO7472, MO7659, MO7983, MO8229, MO8685

Test Method : Please refer to next page (s)

Test Conclusion : Please refer to next page (s)

Date of Receipt sample : 2019-06-26

Date of Test : 2019-06-26 to 2019-07-03

Date of Issue : 2019-07-03

Test Result : Please refer to next page (s)

Remarks:

The results shown in this test report refer only to the sample(s) tested, this test report cannot be reproduced, except in full, without prior written permission of the company. The report would be invalid without specific stamp of test institute and the signatures of reporter and reviewer.

Prepared By:

Waltek Services (Foshan) Co., Ltd.

Address: No.13-19, 2/F., 2nd Building, Sunlink International Machinery City, Chencun, Shunde District, Foshan, Guangdong, China

Tel:+86-757-23811398 Fax:+86-757-23811381 E-mail:info@waltek.com.cn

Compiled by:

Swing Liang

Swing.Liang / Project Engineer

Approved by:



Ding Zhang

Ding Zhang / Lab Manager

**Test Requested**..... :

- 1) Determination of Cadmium content in the submitted sample in accordance with REACH regulation Annex XVII Entries 23 (EC) No. 1907/2006 and the amendment No. 552/2009, No. 494/2011, No. 835/2012 and (EU) 2016/217
- 2) Determination of specified Phthalates content according to Annex XVII Items 51 & 52 of the REACH Regulation (EC) No. 1907/2006 & Amendment No. 552/2009 & No. 2018/2005
- 3) Determination of specified Polycyclic Aromatic Hydrocarbons (PAHs) content in submitted sample in accordance with Entries 50 of Annex XVII of REACH Regulation (EC) No 1907/2006 and its amendment Regulation (EU) No 1272/2013.
- 4) Determination of Benzene content in the submitted sample in accordance with Annex XVII Entries 5 of the REACH Regulation (EC) No. 1907/2006 and the Amendment (EU) No. 2015/1494



WALTEK

**Test Result:****1) Cadmium (Cd)**

Test Method: With reference to IEC 62321-5:2013, the analysis was performed by ICP-OES.

Test Item	MDL (mg/kg)	Results (mg/kg)	
		No.1	No.2
Cadmium(Cd)	2	ND	ND
Conclusion	--	Pass	Pass

Note:

- (1) mg/kg = milligram per kilogram
- (2) ND = Not Detected (lower than MDL)
- (3) MDL = Method Detection Limit
- (4) Limit of Cadmium according to REACH regulation Annex XVII Item 23 (EC) No. 1907/2006 and the amendment No. 552/2009, No. 494/2011 and No. 835/2012 and (EU) 2016/217.

Category	Limit (mg/kg)
Wet paint	100
Surface coating	1000
Plastic	100
Metal parts of jewellery and hair accessories	100

WALTEK



2) Phthalates

Test Method: With reference to EN14372:2004, by Gas Chromatographic-Mass Spectrometric (GC-MS) analysis.

Test Items	MDL (%)	Results (%)		Limit (%)
		No.1	No.2	
Benzyl butyl phthalate (BBP)	0.005	ND	ND	sum of four phthalates < 0.1
Di (2-ethyl hexyl)- phthalate (DEHP)	0.005	ND	ND	
Dibutyl phthalate (DBP)	0.005	ND	ND	
Diisobutyl phthalate (DIBP)	0.005	ND	ND	
Diisodecyl phthalate (DIDP)	0.01	ND	ND	sum of three phthalates < 0.1
Diisononyl phthalate (DINP)	0.01	ND	ND	
Di-n-octyl phthalate (DNOP)	0.005	ND	ND	
Conclusion	--	Pass	Pass	--

Note:

DBP= Dibutyl phthalate

BBP= Benzyl butyl phthalate

DEHP= Bis-(2-ethylhexyl)- phthalate

DINP= Di-isononyl phthalate

DNOP= Di-n-octyl phthalate

DIDP= Di-isodecyl phthalate

DIBP= Diisobutyl phthalate

(1) % = percentage by weight

(2) ND = Not detected or Less than the method detection limit

(3) MDL=Method Detection Limit

(4) "<" = less than

(5) The above limit was quoted according to Annex XVII Items 51 & 52 of the REACH Regulation (EC) No. 1907/2006 & Amendment No. 552/2009 & No. 2018/2005 (formerly known as Directive 2005/84/EC) for phthalate content in toys and child care articles.



3) Polycyclic Aromatic Hydrocarbons (PAHs)

Test Method: With reference to AFPS GS 2014:01 PAK method, analysis was performed by Gas Chromatographic Mass Spectrometry (GC-MS).

Test Items	Unit	Results	MDL	Limit
		No.1		
Benzo(a)anthracene (BaA)	mg/kg	ND	0.2	0.5
Chrysene (CHR)	mg/kg	ND	0.2	0.5
Benzo[b]fluoranthene (BbFA)	mg/kg	ND	0.2	0.5
Benzo[k]fluoranthene (BkFA)	mg/kg	ND	0.2	0.5
Benzo(a)pyrene (BaP)	mg/kg	ND	0.2	0.5
Dibenzo[a,h]anthracene (DBAhA)	mg/kg	ND	0.2	0.5
Benzo[j]fluoranthene (BjFA)	mg/kg	ND	0.2	0.5
Benzo[e]Pyrene (BeP)	mg/kg	ND	0.2	0.5
Conclusion	--	Pass	--	--

Test Items	Unit	Results	MDL	Limit
		No.2		
Benzo(a)anthracene (BaA)	mg/kg	ND	0.2	0.5
Chrysene (CHR)	mg/kg	ND	0.2	0.5
Benzo[b]fluoranthene (BbFA)	mg/kg	ND	0.2	0.5
Benzo[k]fluoranthene (BkFA)	mg/kg	ND	0.2	0.5
Benzo(a)pyrene (BaP)	mg/kg	ND	0.2	0.5
Dibenzo[a,h]anthracene (DBAhA)	mg/kg	ND	0.2	0.5
Benzo[j]fluoranthene (BjFA)	mg/kg	ND	0.2	0.5
Benzo[e]Pyrene (BeP)	mg/kg	ND	0.2	0.5
Conclusion	--	Pass	--	--

Note:

- (1) ND = Not Detected or less than method detection limit
- (2) mg/kg=milligram per kilogram=ppm
- (3) MDL = Method Detection Limit
- (4) As per Entries 50 of Annex XVII of REACH Regulation (EC) No 1907/2006 and its amendment Regulation (EU) No 1272/2013, Articles shall not be placed on the market for supply to the general public, if any of their rubber or plastic components that come into direct as well as prolonged or short-term repetitive contact with the human skin or the oral cavity, under normal or reasonably foreseeable conditions of use, contain more than 1 mg/kg (0,0001 % by weight of this component) of any of the listed PAHs.
- (5) As per Entries 50 of Annex XVII of REACH Regulation (EC) No 1907/2006 and its amendment Regulation (EU) No 1272/2013, Toys, including activity toys, and childcare articles, shall not be placed on the market, if any of their rubber or plastic components that come into direct as well as prolonged or short-term repetitive contact with the human skin or the oral cavity, under normal or reasonably foreseeable conditions of use, contain more than 0.5 mg/kg (0,00005 % by weight of this component) of any of the listed PAHs.



4) Benzene

Test Method: With reference to US EPA 3550C:2007& US EPA 8270D: 2014, analysis was performed by GC-MS

Test Item	MDL (mg/kg)	Results (mg/kg)		Limit (mg/kg)
		No.1	No.2	
Benzene*	1	ND	ND	5
Conclusion	--	Pass	Pass	--

Note:

- (1) mg/kg = milligram per kilogram
- (2) ND = Not Detected (lower than MDL)
- (3) MDL = Method Detection Limit
- (4) As per Annex XVII Items 5 of the REACH Regulation (EC) No. 1907/2006 and the Amendment (EU) No. 2015/1494, benzene shall not be used in toys or parts of toys where the concentration of benzene in the free state is greater than 5 mg/kg (0,0005 %) of the weight of the toy or part of toy.
- (5) The testing item marked with '*' do not been accredited by CNAS

Test Specimen Description:

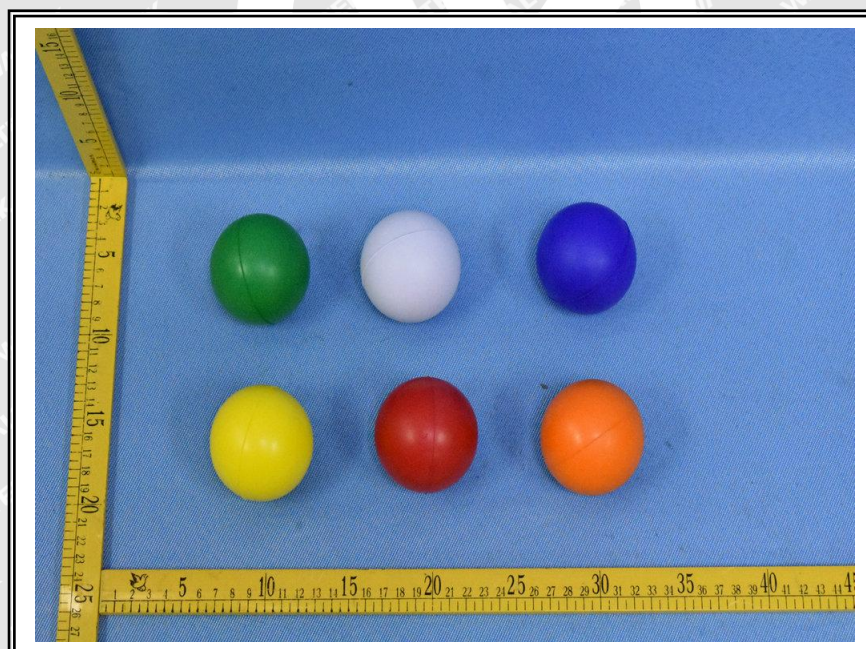
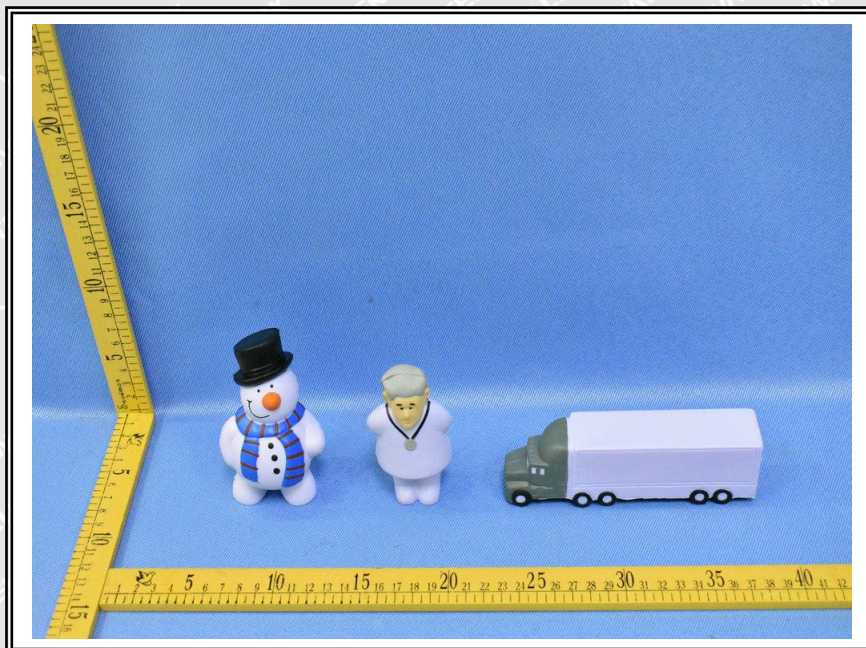
No.1: Multi-color printed white foam

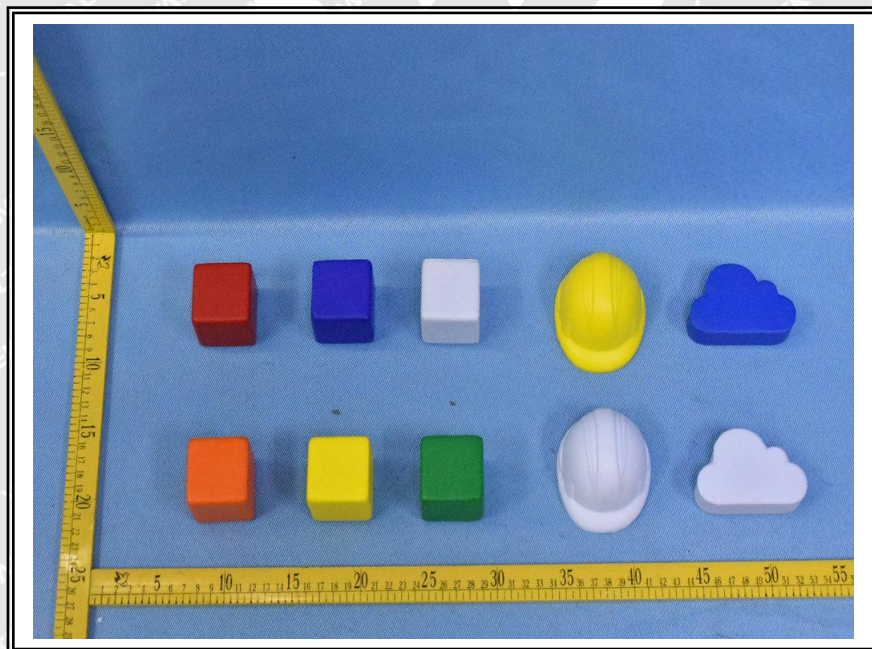
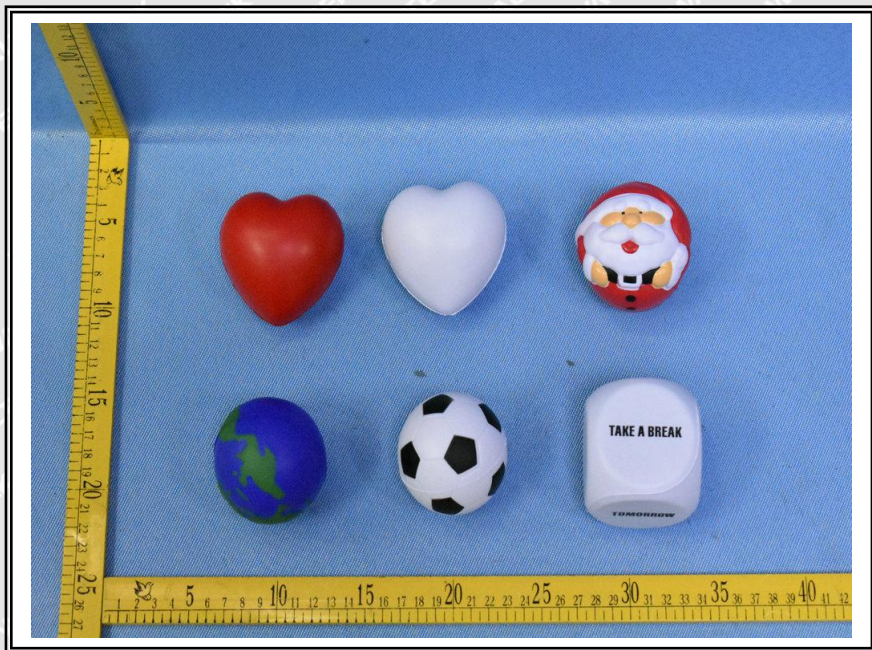
No.2: Red foam ball

WALTEK



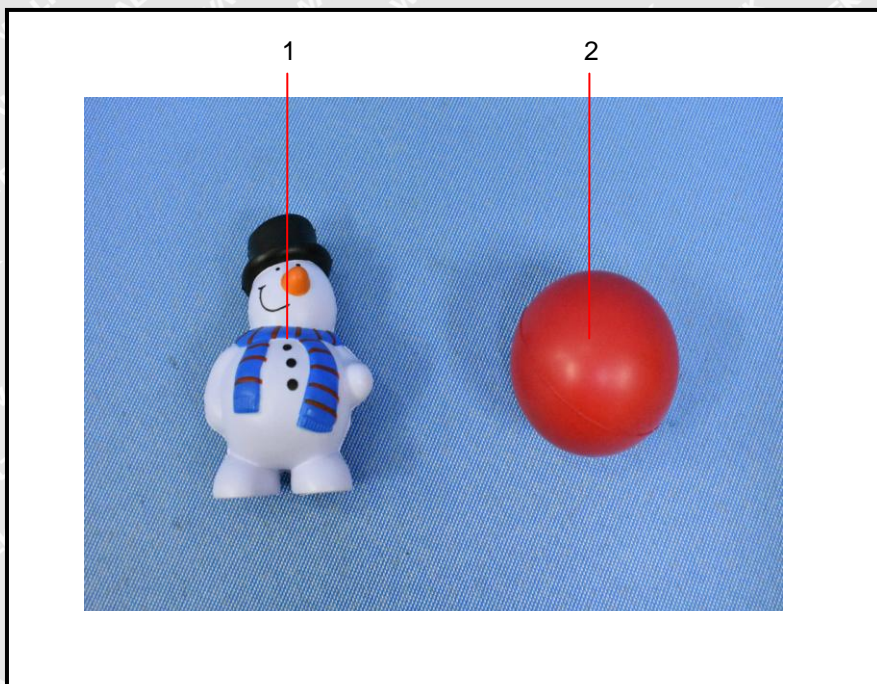
Sample photo:







Photographs of parts tested:



===== End of Report =====

WALTEK