



中国认可
国际互认
检测
TESTING
CNAS L6478



TEST REPORT

Reference No. : WTF19F05031187A1C

Applicant : Mid Ocean Brands B.V.

Address : 7/F., Kings Tower, 111 King Lam Street, Cheung Sha Wan, Kowloon, Hong Kong

Manufacturer : 112213

Sample Name : Set of 6 tealights, 2 Candles with glass holder, 4 candles, Decoration tealight holder, Scented candle in glass, Transparent glass holder with tealight

Model No. : CX1457, CX1458, CX1459, CX1460, CX1461, MO9030, MO9734

Test Requested : 1) Determination of Cadmium content in the submitted sample in accordance with REACH regulation Annex XVII Entries 23 (EC) No. 1907/2006 and the amendment No. 552/2009, No. 494/2011, No. 835/2012 and (EU) 2016/217
2) Determination of Lead content in the submitted sample in accordance with REACH regulation Annex XVII Entries 63 (EC) No. 1907/2006 and the amendment No. 836/2012 and (EU) 2015/628
3) Determination of specified Phthalates content according to Annex XVII Items 51 & 52 of the REACH Regulation (EC) No. 1907/2006 & Amendment No. 552/2009 & No. 2018/2005
4) As specified by client, determination of the free and hydrolysed formaldehyde content in submitted sample

Test Method : Please refer to next page (s)

Test Conclusion : Please refer to next page (s)

Date of Receipt sample : 2019-05-17 & 2019-05-28

Date of Test : 2019-05-17 to 2019-06-05

Date of Issue : 2019-06-05

Test Result : Please refer to next page (s)

Remarks:

The results shown in this test report refer only to the sample(s) tested, this test report cannot be reproduced, except in full, without prior written permission of the company. The report would be invalid without specific stamp of test institute and the signatures of reporter and reviewer.

Prepared By:

Waltek Services (Foshan) Co., Ltd.

Address: No.13-19, 2/F., 2nd Building, Sunlink International Machinery City,
Chencun, Shunde District, Foshan, Guangdong, China

Tel:+86-757-23811398 Fax:+86-757-23811381 E-mail:info@waltek.com.cn

Compiled by:

Swing Liang

Swing.Liang /Project Engineer

Approved by:



Dino Zhang

Dino.Zhang /Lab Manager

**Test Result:****1) Cadmium (Cd)**

Test Method: With reference to IEC 62321-5:2013, the analysis was performed by ICP-OES.

Test Item	MDL (mg/kg)	Results (mg/kg)	
		No.2+No.10	No.7+No.8
Cadmium(Cd)	2	ND*	ND*
Conclusion	--	Pass	Pass

Note:

(1) mg/kg = milligram per kilogram

(2) ND = Not Detected (lower than MDL)

(3) MDL = Method Detection Limit

(4) Limit of Cadmium according to REACH regulation Annex XVII Item 23 (EC) No. 1907/2006 and the amendment No. 552/2009, No. 494/2011 and No. 835/2012 and (EU) 2016/217.

Category	Limit (mg/kg)
Wet paint	100
Surface coating	1000
Plastic	100
Metal parts of jewellery and hair accessories	100

(5) "*" = Results are calculated by the minimum weight of mixed components.



WALTEK

**2) Lead (Pb)**

Test Method: With reference to IEC 62321-5:2013, the analysis was performed by ICP-OES.

Test Item	MDL (mg/kg)	Results (mg/kg)		Limit (mg/kg)
		No.1	No.2+No.10	
Lead(Pb)	2	ND	ND*	500
Conclusion	--	Pass	Pass	--

Test Item	MDL (mg/kg)	Results (mg/kg)				Limit (mg/kg)
		No.3	No.4	No.5	No.6	
Lead(Pb)	2	ND	ND	ND	ND	500
Conclusion	--	Pass	Pass	Pass	Pass	--

Test Item	MDL (mg/kg)	Results (mg/kg)			Limit (mg/kg)
		No.7	No.8	No.9	
Lead(Pb)	2	106	88	ND	500
Conclusion	--	Pass	Pass	Pass	--

Note:

- (1) mg/kg = milligram per kilogram
- (2) ND = Not Detected (lower than MDL)
- (3) MDL = Method Detection Limit
- (4) Limit of Lead was quoted from REACH regulation Annex XVII Item 63 (EC) No. 1907/2006 and the amendment No. 836/2012 and (EU) 2015/628.
- (5) "*" = Results are calculated by the minimum weight of mixed components.

WALTEK



3) Phthalates

Test Method: With reference to EN14372:2004, by Gas Chromatographic-Mass Spectrometric (GC-MS) analysis.

Test Items	MDL (%)	Results (%)		Limit (%)
		No.2+No.10	No.7+No.8	
Benzyl butyl phthalate (BBP)	0.005	ND*	ND*	sum of four phthalates < 0.1
Di (2-ethyl hexyl)- phthalate (DEHP)	0.005	ND*	ND*	
Dibutyl phthalate (DBP)	0.005	0.032*	ND*	
Diisobutyl phthalate (DIBP)	0.005	ND*	ND*	
Diisodecyl phthalate (DIDP)	0.01	ND*	ND*	sum of three phthalates < 0.1
Diisononyl phthalate (DINP)	0.01	ND*	ND*	
Di-n-octyl phthalate (DNOP)	0.005	ND*	ND*	
Conclusion	--	Pass	Pass	--

Note:

DBP= Dibutyl phthalate

BBP= Benzyl butyl phthalate

DEHP= Bis-(2-ethylhexyl)- phthalate

DINP= Di-isononyl phthalate

DNOP= Di-n-octyl phthalate

DIDP= Di-isodecyl phthalate

DIBP= Diisobutyl phthalate

(1) % = percentage by weight

(2) ND = Not detected or Less than the method detection limit

(3) MDL=Method Detection Limit

(4) "<" = less than

(5) The above limit was quoted according to Annex XVII Items 51 & 52 of the REACH Regulation (EC) No. 1907/2006 & Amendment No. 552/2009 & No. 2018/2005 (formerly known as Directive 2005/84/EC) for phthalate content in toys and child care articles.

(6) "*" = Results are calculated by the minimum weight of mixed components.



4) Formaldehyde

Test Method: With reference to EN 717-3:1996, analysis was performed by UV-VIS

Test Item	Unit	Result	MDL	Client's Limit
		No.7		
Formaldehyde (CH ₂ O)	mg/kg	14	10	80
Conclusion	--	Pass	--	--

Note:

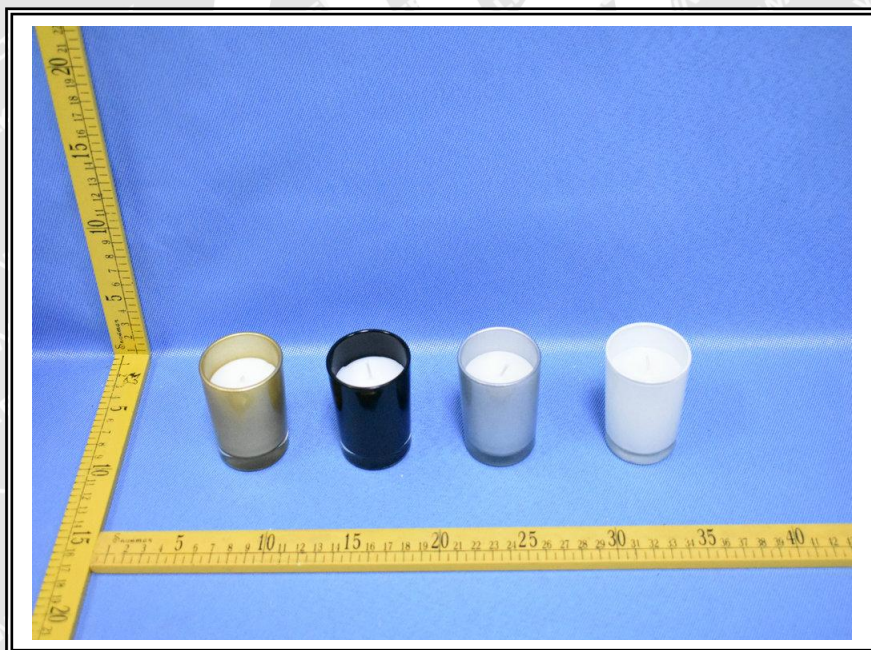
- mg/kg =milligram per kilogram=ppm
- MDL= Method Detection Limit

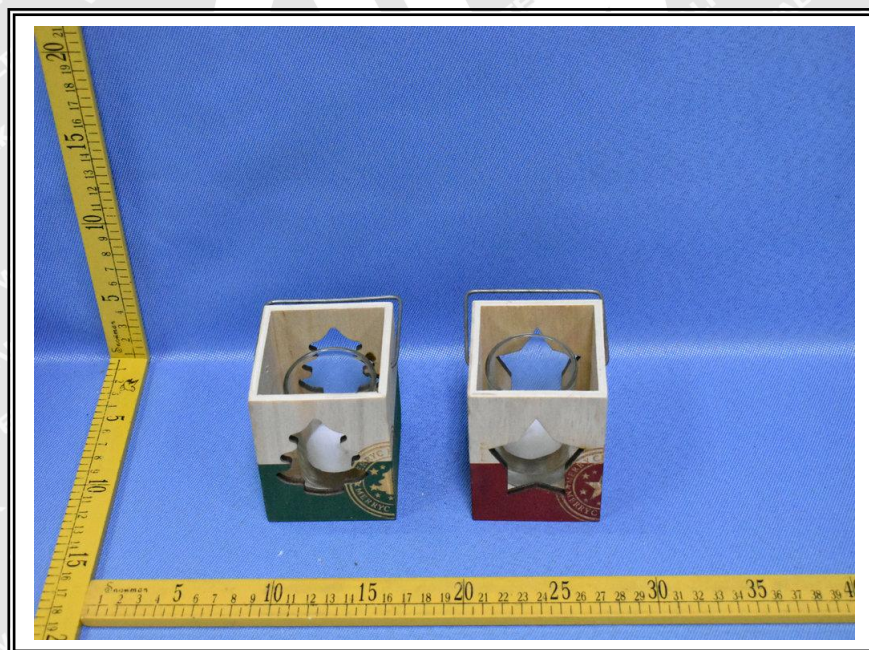
Test Specimen Description:

- No.1:White wick
- No.2:White candle with silvery coating
- No.3:Silvery metal holder
- No.4:Transparent glass holder
- No.5:Silvery metal plate
- No.6:Silvery metal handle
- No.7:Brown wooden box with red coating
- No.8:Brown wooden box with green coating
- No.9:Transparent glass holder
- No.10:Black candle



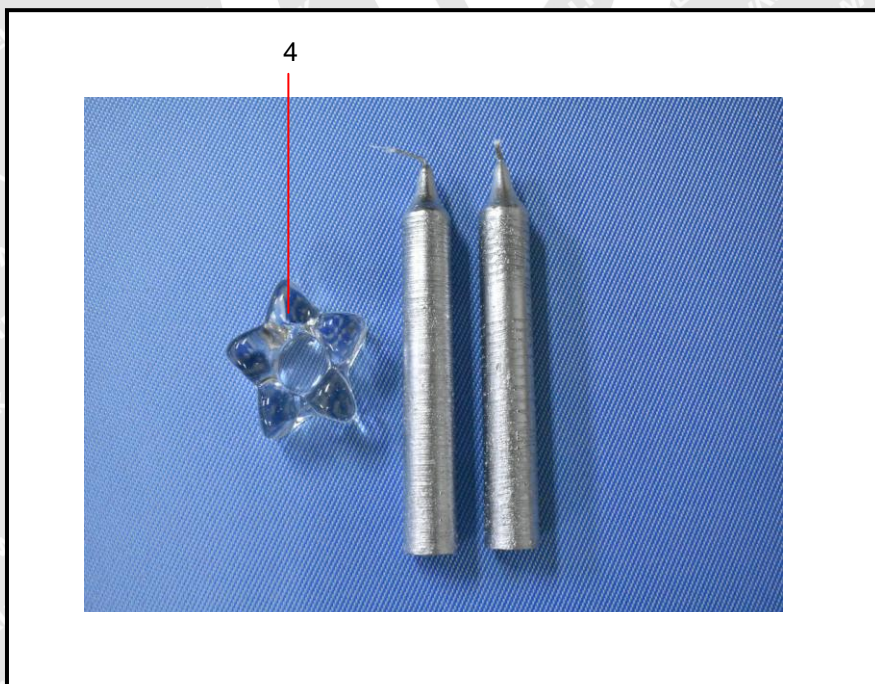
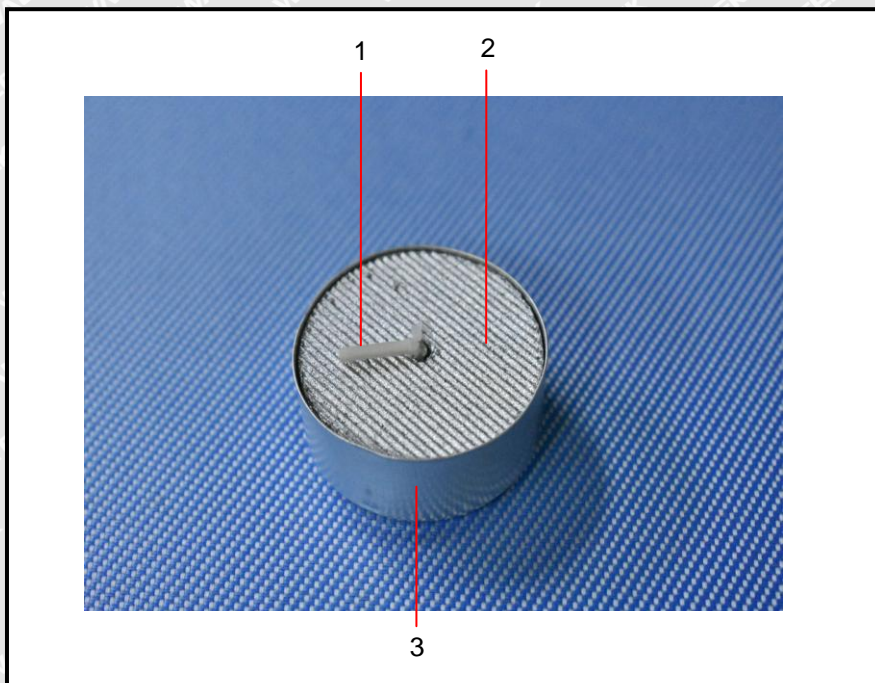
WALTEK

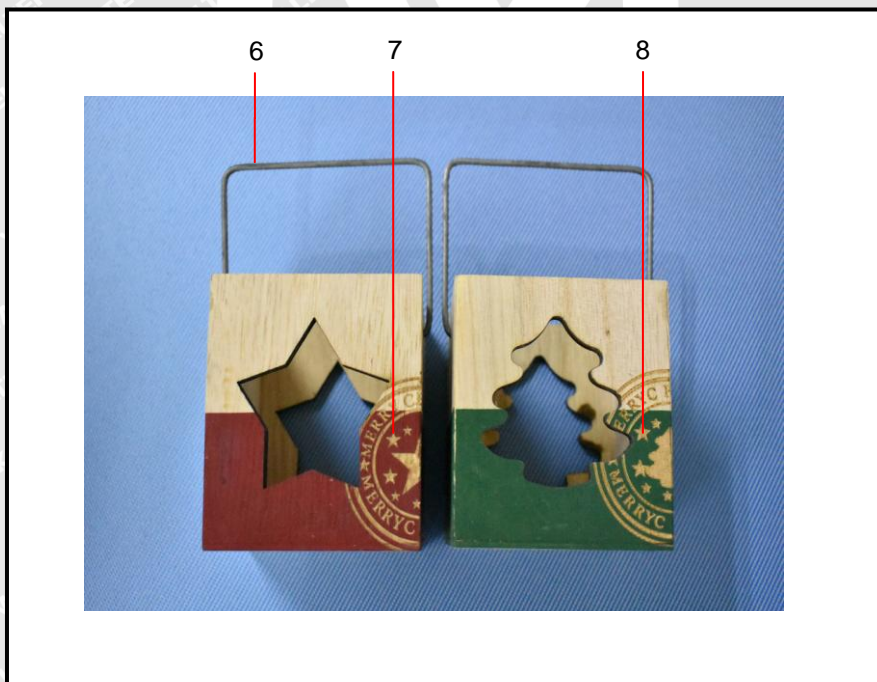
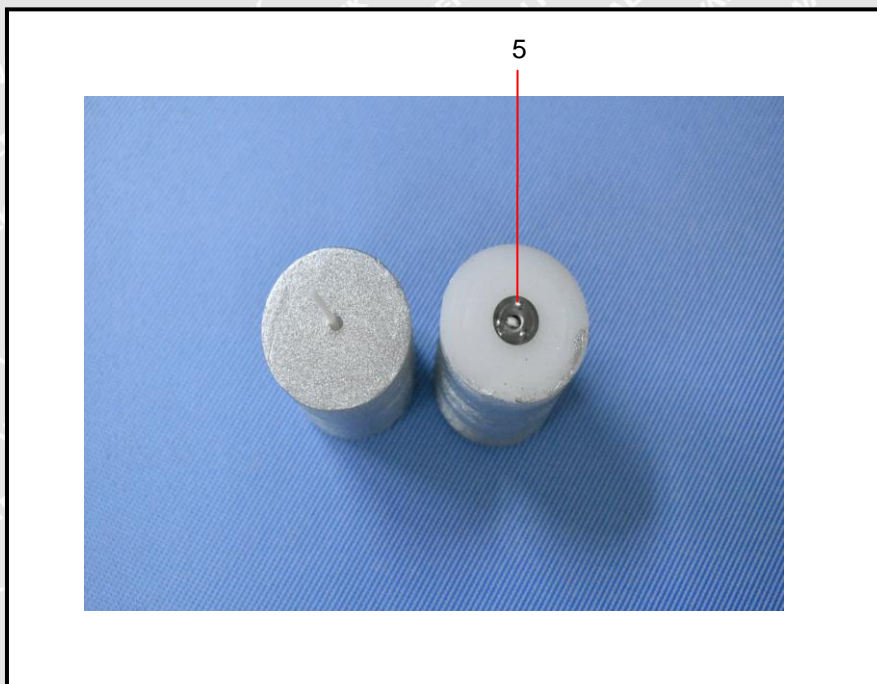
**Sample photo:**





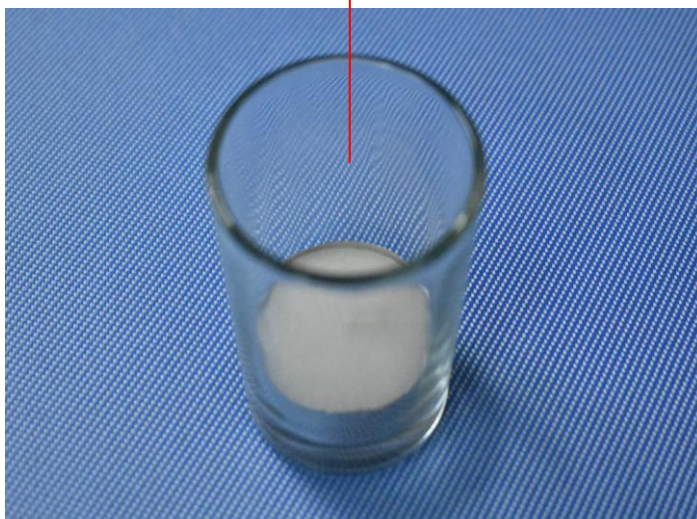
Photographs of parts tested:



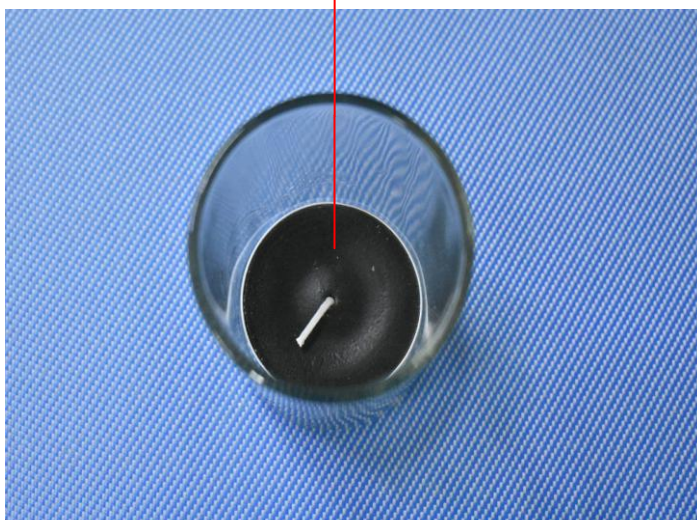




9



10



===== End of Report =====